



A platform of Big Data Solution (eData.sg)

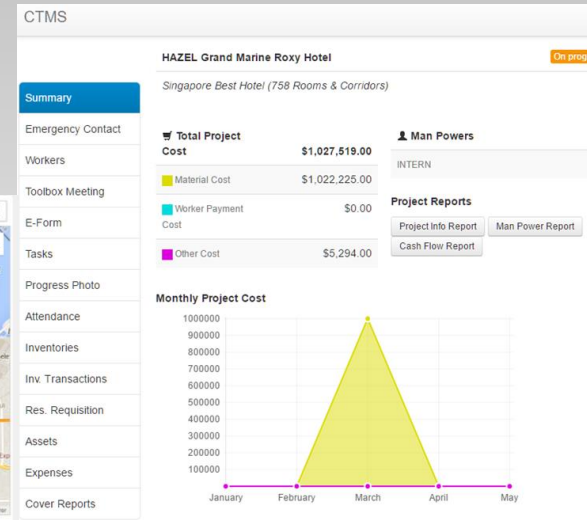
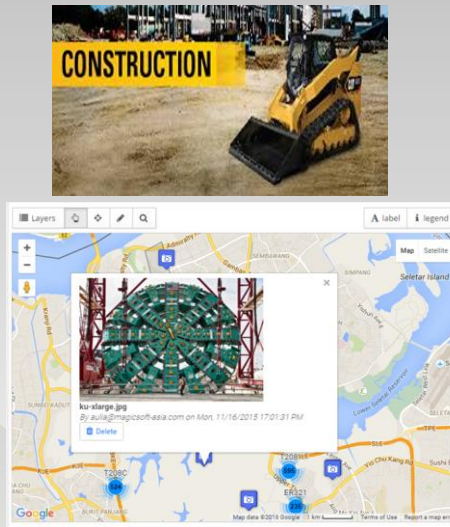
5 August 2016

Kenny Tew
Business Development Manager
Magicsoft Asia Systems Pte Ltd

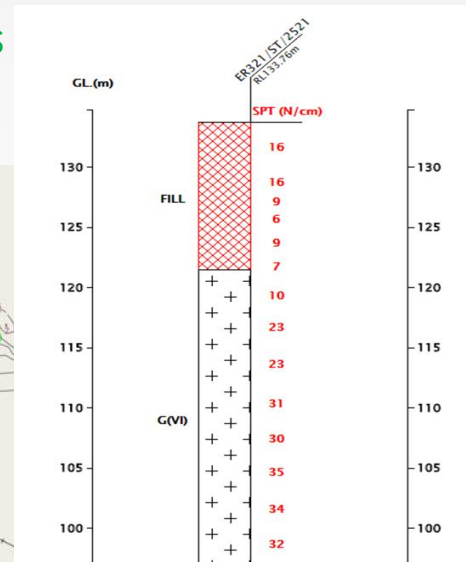
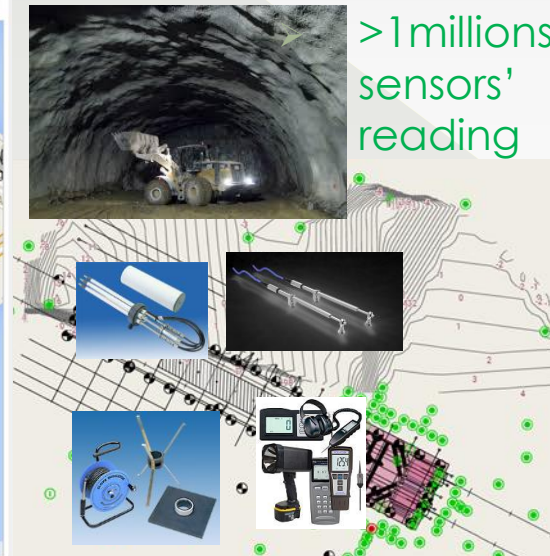
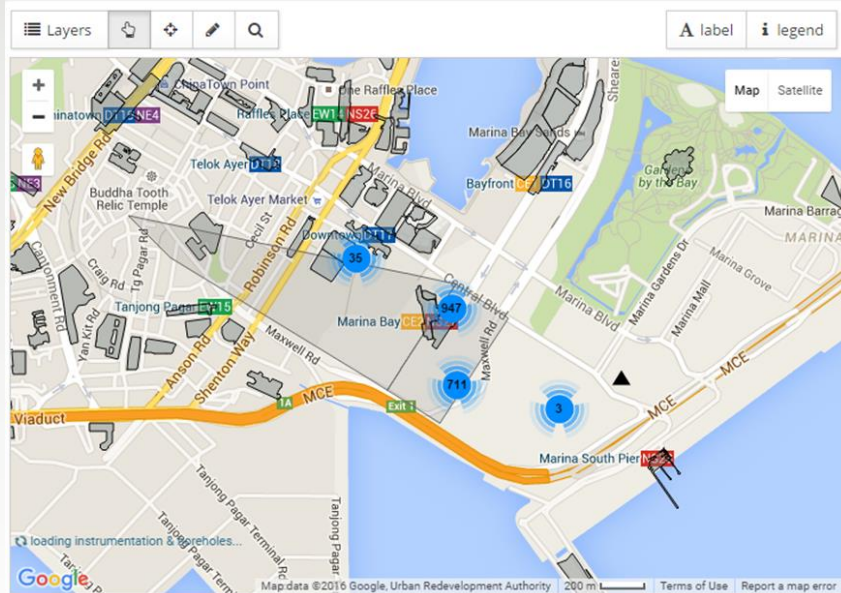
CTMS, Construction monitoring systems



● Above ground activities monitoring



Under ground activities monitoring



CTMS Features (>130 modules and features, > 200 analysis reports)

- **Photo Archives**
- **Mobile App**
- **Electronic Filing**
- **Project Management**
- **Project Task assignment**
- **Inventory Management**
- **Attendance Management**
- **Worker Management**
- **Safety checklist**
- **Permit to works (eptw)**
- **Toolbox meeting**
- **Progress photo**
- **Noncompliance list**
- **Inspection/Audit list**
- **Multiple language (Tamil, English, Chinese, Bahasa, Bangladesh)**
- **User Management**
- **Roles Management**
- **Contract Management**
- **Contractor Management**
- **Master Data Management**
- **Map Layer Management**
- **Upload Map Layer (CAD drawing)**
- **System Alert**
- **Report Scheduler**
- **Customized Report**
- **Upload Site Investigation Data File**
- **Upload Construction Activity**
- **Upload Design Value**
- **EMS Data Analysis**
- **Breached Data**
- **Instrumentation Alerts**
- **Reporting**
- **Prediction Analysis**
- **" ... "**



e-Permit To Work System

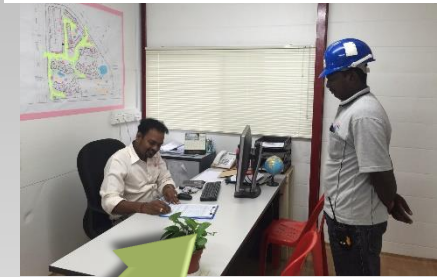
Supervisor to check and apply PTW



Safety Assessor to assess and endorse



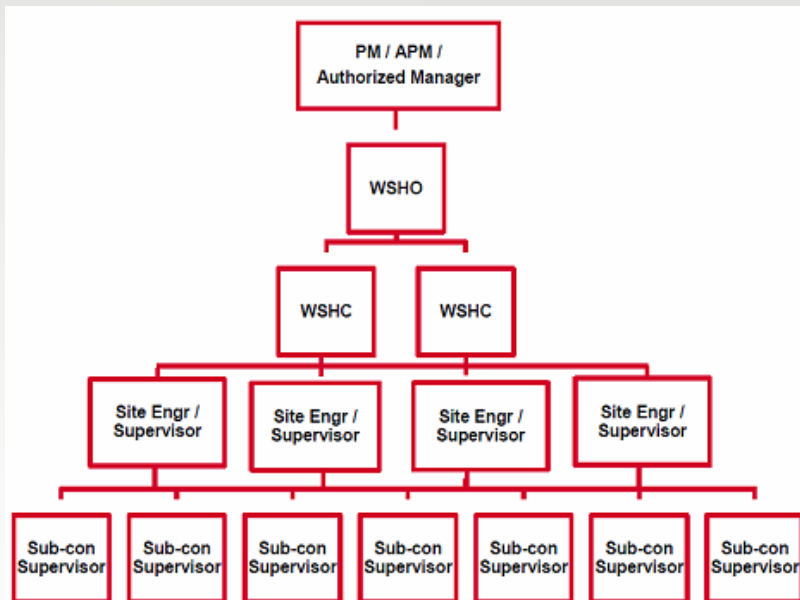
Project Manager Approve



Maincon Rep to check



WSH Officer to Verify PTW



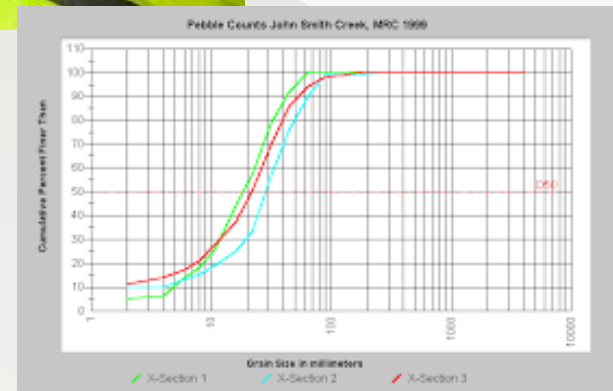
PING FORM PTE LTD
WEEKLY SAFETY INSPECTION REPORT

Location / Project: *Building of new school building* Date / Time: *24.06.2024*
Inspector: *Fahma Nurazhar* Position: *S.E. Engr*

No	Name to check	Observations	Recommendation	Action By	Date of Completion	Status
1.	<i>Site Engr</i>	<i>One & Two person working in the site. Is not follow the safety rule. No one early request lock, taking away the safety barrier. The safety barrier not remove the work site already.</i>	<i>I instructing to the supervisor for the work. No one early request lock, taking away the safety barrier. The safety barrier not remove the work site already.</i>	<i>Supervisor</i>		
2.	<i>Worker</i>	<i>Worker not follow the safety rule. No one early request lock, taking away the safety barrier. The safety barrier not remove the work site already.</i>	<i>I instructing to the supervisor for the work. No one early request lock, taking away the safety barrier. The safety barrier not remove the work site already.</i>	<i>Supervisor</i>		
3.	<i>Worker</i>	<i>Worker not follow the safety rule. No one early request lock, taking away the safety barrier. The safety barrier not remove the work site already.</i>	<i>I instructing to the supervisor for the work. No one early request lock, taking away the safety barrier. The safety barrier not remove the work site already.</i>	<i>Supervisor</i>		
4.	<i>Worker</i>	<i>Worker not follow the safety rule. No one early request lock, taking away the safety barrier. The safety barrier not remove the work site already.</i>	<i>I instructing to the supervisor for the work. No one early request lock, taking away the safety barrier. The safety barrier not remove the work site already.</i>	<i>Supervisor</i>		



Collecting Instrument reading manually...spend days, weeks...



The Overview of Construction Management Systems (CTMS)

CTMS is a real-time construction system that allows the contractors to collect, consolidate and manage on-site data with ease. The system utilizes the Smartphone mobility and Web extensibility to help engineers in achieving working efficiency and accuracy.

Project Engineers (mobile)



Systems Admin/ Clerk/ Account/ HR



Equipment Information



SAFETY FIRST
Safety Checklist



Non conformance List / Punch list



Notification / Alert (SMS / Email)



CTMS - Mobile

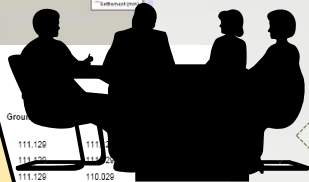
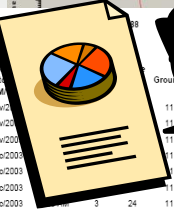


Worker Attendance



Permit to Works (e-Sign)

Settlement (mm)
from 17/11/2002 11:20:00 to 21/06/2004 11:20:00



Project	111.129	111.129	111.129	111.129
Insta	111.129	110.029	-2.100	
Client	111.129	109.829	-1.300	
Date	111.129	107.829	-3.200	
Monitor	111.129	102.229	-8.000	
(DIM)	111.129	102.229	-8.200	
17/Nov/02	3	24	111.129	-7.200
19/Nov/02			111.129	
24/Nov/02			111.129	
01/Dec/02			111.129	
04/Dec/02			111.129	
08/Dec/02			111.129	
11/Dec/02			111.129	
15/Dec/02			111.129	
18/Dec/02			111.129	

Immediate Management Analysis/ Reports



Material Information

Order Now

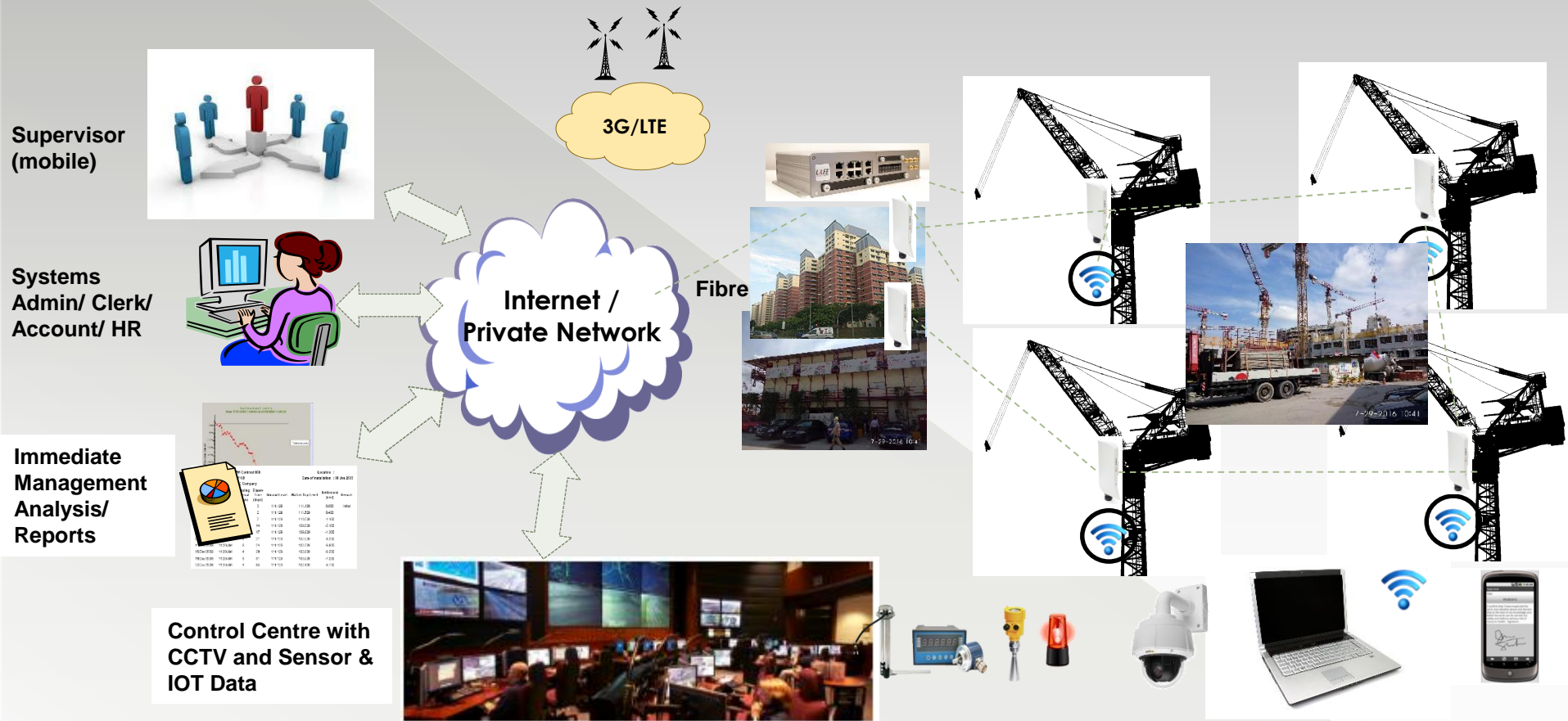
Inventory Status and Order Information

Your logo here

CTMS

IP Connectivity for Construction Site

Providing internet and WiFi coverage to construction site which is out of bound for fibre connection. CCTV, Sensors and other IOT devices.



ROI , Benefits , Impact

Real Time Data for
Management &
Decision Making

Tangible benefit by reducing waiting with whole workforce for PTW approval for works.

100 workers x 52 weeks x 6days x 30min = 15,600 man-hours =

7 man-years Per Project

Thomson line: Geotechnical consultant preparing geotechnical reports after collection of instrument reading

23 stations x 5 consultants x 52 weeks x 2days x 4 hours = 47,840 man-hours =

21 man-year

BIG DATA Business Analytic Capabilities, i.e. Prediction of Sinkhole

